

Outline of the Series

This is a compact switch series rated up to 6A, designed to minimize the height below the panel to as little as 16 mm (for single-pole types), while offering an affordable price. Available types include toggle, rocker, and slide switches.

Features of the Series



1. All standard models use UL94 V-1 certified flame-retardant resin for the case material.
2. The contact structure is designed to minimize bounce, ensuring stable switching performance.
3. All models achieve high performance in a compact and cost-effective design (compared to our conventional products), despite being rated for 6A.

Common Specifications

Ratings

Symbol	01	11	Load	Notes
AC125/250V	6A	3A	Resistive Load	Load only with Resistive, Power Factor=1
DC30V	6A	3A		

* A resistive load refers to a load consisting solely of resistance. In actual circuits, however, there may be inductive, capacitive, or motor loads, each of which can generate inrush current. Therefore, when selecting a switch, be sure to choose a rating with sufficient margin above the steady-state current.

For more details, please refer to "[Useful Advices and Precautions on Usage of Operational Switches.](#)"

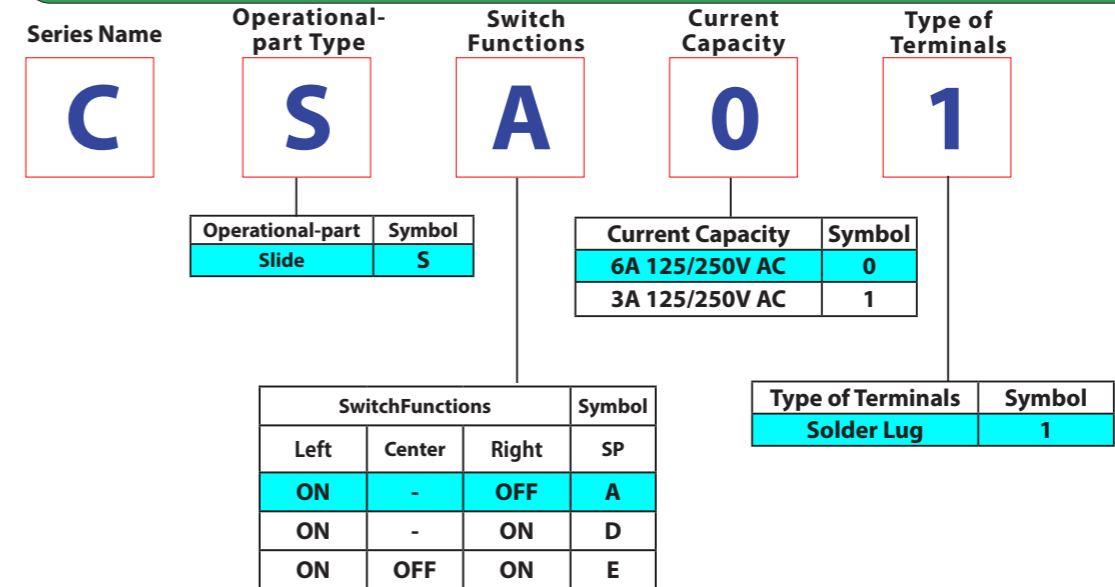
Contact Resistance	20 mΩ Max. (DC2V 1A) (Initial value)
Withstanding Voltage	AC1,500V 1 Minute
Insulating Resistance	1,000MΩ Min. (DC500V)
Electrical Life	10,000 times
Operating Temperature Range	-20°C ~ +70°C
Storage Temperature Range	-20°C ~ +70°C
Hand-soldering Conditions	350 ± 3°C within 3 sec.

Packaging Quantity

400 pcs

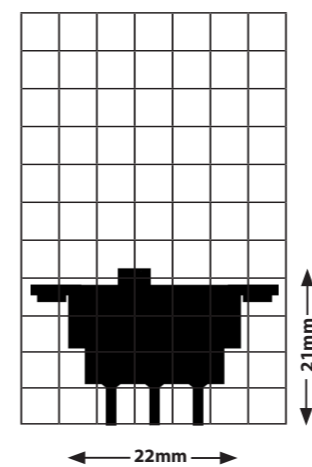
* For products other than those listed above or for custom items, please contact us.

Product Designations

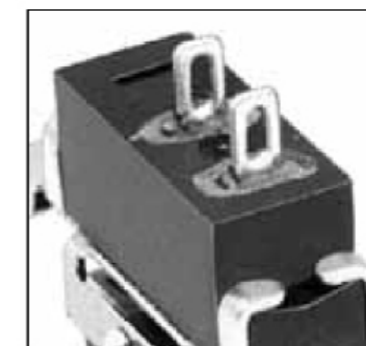


Examples of Terminal Figures (ON-OFF)

Silhouette (CSD01)



Solder Lug



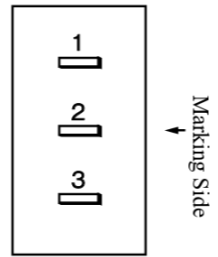
* For products other than those listed above or for custom items, please contact us.

Switch Names, Functions, Terminal Diagram, Dimensions of Terminals, Mounting Hole Dimensions

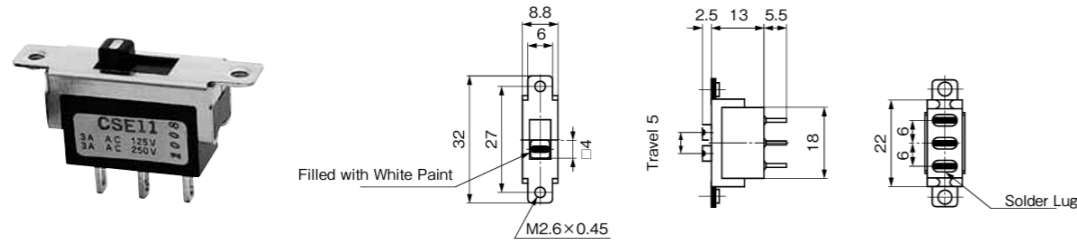
S P

Product Name	Resistive Load	Product Name	Resistive Load	Circuit	Functions < 瞬時Momentary		
	AC125/250V DC30V		AC125/250V DC30V				
CSA01	6A	CSA11	3A	SPST	OFF	—	ON 2-3
CSD01	6A	CSD11	3A	SPDT	ON 2-1	—	ON 2-3
CSE01	6A	CSE11	3A	SPDT	ON 2-1	OFF	ON 2-3

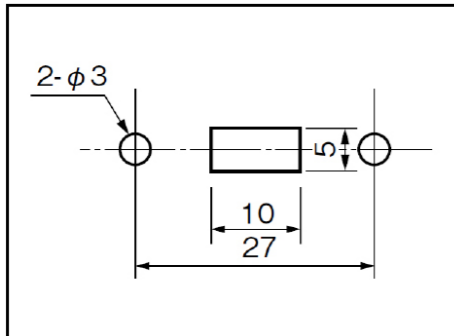
Terminal Diagram



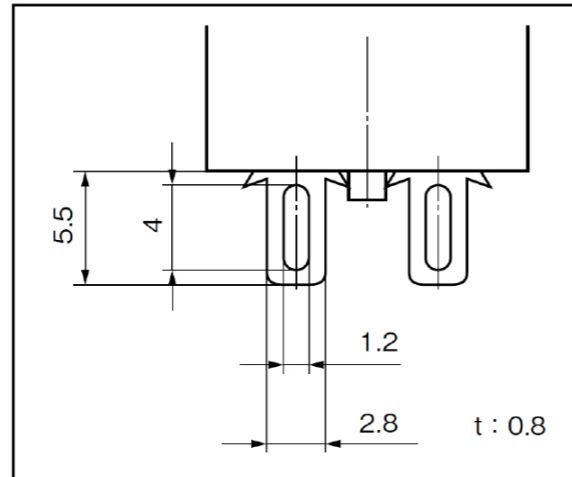
* Terminal Numbers are not indicated on the case.



Mounting Holes Dimensions



Dimensions of Terminals



* For products other than those listed above or for custom items, please contact us.

Compliance with the European RoHS Directive

All DIP switches, control switches, connectors, and terminal blocks manufactured by OTAX with the following RoHS Directive:

Directive 2011/65/EU of the European Parliament and of the Council on the restriction of the use of certain hazardous substances in electrical and electronic equipment (RoHS).

Our products do not contain any of the ten specified hazardous substances (except for exempted applications):

Lead (Pb) Mercury (Hg) Cadmium (Cd) Hexavalent chromium (Cr⁶⁺) Polybrominated biphenyls (PBB)

Polybrominated diphenyl ethers (PBDE) Di(2-ethylhexyl) phthalate (DEHP) Butyl benzyl phthalate (BBP)

Dibutyl phthalate (DBP) Diisobutyl phthalate (DIBP)

* For products other than those listed above or for custom items, please contact us.